



Western Norway  
University of  
Applied Sciences

KINDknow  
Kindergarten Knowledge Centre  
for Systemic Research on Diversity  
and Sustainable Futures



## Semiannual Report 2018

KINDknow notes series 1, 2019



# Table of contents

Preface .....	3
Directors Introduction .....	4
KINDknow - Main focus and core values .....	6
This is Kindknow .....	7
Organisation .....	8
Staff, leader team and extended research milieu .....	9
Methodological design .....	10
Activities and results 2018 .....	11
The opening of KINDknow .....	12
Publications .....	14
Seminars, conferences and presentations .....	17
Applications .....	20
In the media .....	22
Public outreach .....	25
More activities .....	26
Where are we heading? .....	30
Finance and Accounting .....	33

## Preface

This report documents activities and results from KINDknows first half-year: fall 2018. We thank the Research Council Norway and our institutions for the great support. Thanks also to our local and international collaborating partners, friends in academia and the ECE profession.

Denne rapporten dokumenterer aktiviteter og resultater fra første halvår av BARN-kunne: høsten 2018. Vi takker Forskningsrådet og våre institusjoner for god støtte. Takk også til våre lokale og internasjonale samarbeidspartnere, venner i akademia og ECE-profesjonen.

Denne rapporten dokumenterer aktivitetar og resultat frå første halvår av BARN-kunne: hausten 2018. Vi takkar Forskningsrådet og institusjonane våre for god støtte. Takk òg til dei lokale og internasjonale samarbeidspartnarane, vener i akademia og ECE-profesjonen.

Dat raporta duođašta doaimmaid ja bohtosiid vousttaš jahkebeali MÁNÁIDmáhtu: čakčat 2018. Mii giitit Research Council Norway ja min ásašaid buoriid doarjagiid ovddas. Giitit maiddá mu báikkálaš ja riikaidagaskasaš ovttasbargoverddiid, olbmáid akademijain ja ECE-profešuvdna.

此报告记录了2018 中心成立后的半年里所开展的活动及所取得的成绩。在此我们衷心感谢挪威研究委员会和我们大学的慷慨支持。我们亦向合作伙伴、学术界的朋友及国内外学前教育界同行致以诚挚谢意。

## Director's Introduction

This first half year after the official opening has been exciting and challenging. KINDknow has been highly active both locally at various campuses and internationally, with invitations for presentations of the centre, keynotes at conferences and collaboration on research proposals for external funding.

2018 was a year to provide the basis for establishing KINDknow as a Research Centre. This task included a wide range of preparatory activities. We started early in 2018 with advertising for a research coordinator, PhD students and reorganising selected PhD students, post-docs and key researchers already involved. We prepared for the setup also with a strategic seminar for further developing local and international collaborations. We learnt about Horizon 2020 applications and sent applications relevant to our aims. Furthermore, preparation for establishing project website and the official opening of the center was done during the spring of 2018. In August 2018, we arranged an opening conference where the milieu and cooperating partners gave keynotes, short presentations with posters being displayed outside the venue. The celebration included a reception held by Bergen municipality. The preparations in spring and autumn 2018 included discussions of core values, policy, operationalization of our aims and of the Research Council of Norway's core criteria for success. During the autumn we continued grounding preparations and developing research. We also prepared for suitable location at HVL, campus Bergen, Fabrikkgaten 5.

We attended several meetings with stakeholders and target groups from municipalities and organisations in order to establish and strengthen partnership and participatory research relationship to further develop participatory research designs. Milestones, such as hosting conferences, needs a long-term perspective, therefore we have started preparations to host future conferences in Tromsø in 2020, and in Bergen in 2019, 2020 and 2022 respectively, all with collaborating partners. Professor II, Marilyn Fler visited both UiT, the arctic university of Norway as well as HVL in August for planning events and future collaboration between research groups at Monash University and the KINDknow center. The activities at the centre have had the combination of building networks, offering opportunities to learn and discuss research theory, methodology and analysis. On an everyday basis, the milieu has been working on establishing their work packages and reorganizing and fulfilling different obligations.

I will highlight two ongoing processes starting early 2018 which gave good manifestations of this first half year. First, our HVL milieu's 15 years' history of collaboration and exchange with Chinese educational institutions and the result it gave this autumn. Three researchers from HVL and one from UiT, participated in the Education & Research Ministers Iselin Nybø's delegation's visit to China in spring 2018. Our milieu had busy days with extensive meetings with collaborating partners at Beijing Institute of Education, Beijing Normal University, East China Normal University and a panel presentation on the Education Day at Beijing Normal University.

The panel also included a collaboration with researchers from OsloMet. In June 2018, we received a group of 4 kindergarten principals and 7 key officials in charge of early childhood education from three provinces of China and held workshops and seminars at campus Bergen. In September the Director was invited to Northeast Normal University of China for a Keynote at an international Early Childhood Conference (IRECE Monash University, Australia).

In October, the milieu with collaborators from Beijing Normal University and the Norwegian Royal Embassy was involved in the King and Queen's state visit to China and the visit to Chinese kindergartens. Also, 25 students from HVL were in China for international field experiences at the time. The second highlight is the collaborative engagement in applications for research and international collaborations. So far one group (WP10) within KINDknow has been successful in their attempt as a partner in a project with the aim of evaluating the implementation of the Norwegian Framework plan, led by NORCE and financed by the Norwegian Directorate of Education.

As we navigated through our first half year we were challenged and encouraged with several questions about our place in our respective organisations, as well as in the wider research communities. What does it mean to be an externally funded research center within own organization, locally in our region and internationally? As the center has several locations both in the west and in the north, how should we overcome challenges of effective and constructive communication and at the same time

reduce our Co2 footprints? How should we engage in new digital opportunities for communication and collaboration locally and internationally? How should we realize our ambitious aims, also formulated as success criteria by the Research Council of Norway? On what level should we cooperate with the Filiorum Center at UiS? How can our milieu support PhD students when it comes to quality, relevance and fulfilment on time? How should we include other staff and cooperative partners and at the same time give time to concentration and quality refinements required? What are the necessary grips to take in order to fulfil high quality research at international top level in our field? How can we recruit the right people in order to build a team that can carry out high quality international research, and at the same time participate in competence development across stakeholders as staff in kindergartens and in teacher education? And how can we make sure that the research will benefit stakeholders already mentioned and in addition including stakeholders such as children, families, kindergarten owners and the planet earth? The ambition of grounding for new knowledge for diversity and sustainable futures is held high in this first half year.

Elin Eriksen Ødegaard,  
Director



Photo: Erik M. Sundt

# KINDknow - Main focus and core values

## Sustainability

- > Act upon new understandings and knowledge about education for diversity (EfD).
- > Act upon education for sustainable futures (ESF).
- > Support the development of quality and competence in early years education through participatory design.
- > Improve solutions to provide ecologically sound outcomes for families and staff in kindergartens.

## Excellence

- > Engage in high-quality, relevant and committed research.
- > Nurture a creative, inclusive and high-achieving community of researchers based on trust, ethics and open communication.

## Interdisciplinarity

- > Apply broad views of understandings and knowledge creation through collaboration across disciplines, institutions, and organisations.

## Glocality

- > Lead and mediate authentic collaboration locally, nationally and globally.
- > Ensure that diverse cultural perspectives are continuously represented.

## Sharing

- > Share knowledge and resources with fellows and citizens.

# This is KINDknow

KINDknow is a research centre on kindergarten knowledge. The main aim is to contribute to research on how living together as eco-citizens can be achieved through better understandings of local and global conditions affecting practices in kindergartens. In doing this, the centre aims to take the lead both nationally and internationally in developing holistic and systemic understandings and knowledge about education for diversity (EfD) and education for sustainable futures (ESF) in kindergartens. The centre aligns itself with the ideas in the United Nations' Frameworks for Education for Sustainable Development and Futures, the article 12 in the UN Convention on the rights of the child and the Norwegian kindergarten act and curriculum, known as the Framework Plan (FWP).

In increasingly diverse societies of today, this centre will engage in vital, socially relevant and ethically committed research to improve the future lives and outcomes for children, families and staff in kindergartens. Multiple methods including, mapping, innovation and collaborative, comparative and narrative field work are undertaken.

Two main areas of research are prioritized:

1. Governance, leadership and close cooperation with kindergartens and education relevant in field of kindergarten at bachelor, master, in-service, leadership and PhD level.
2. Play, learning, care and cultural formation – local and global practices.

The centre was established in August 2018. The Research Council of Norway finance the centre with 25 million NOK over a period of five years (2018-2023). More partners contribute with human and economic capital. The centre is located at Western Norway University of Applied Sciences (HVL) and gathers researchers and stakeholders that share the interest and competence across Norway and internationally. HVL, UiT - The Arctic University of Norway, the University of Stavanger (UiS) and municipalities in the north and in the west are additional financing partners. Close cooperation and agreements of common interest and further development are also established with partners in China, Australia, UK, Finland and Sweden.

## Main goals for the next 5 years

- > Advance our understanding of education for sustainability and diversity by considering how kindergartens face contemporary challenges and changes in societies and in ecological conditions.
- > Generate theoretical knowledge about bildung, change, leadership and pedagogical practices.
- > Implement and share expertise, build capacities and exchange knowledge across local and global research communities.
- > Collaborate and inform local communities (kindergartens, municipalities, teachers, parents and children) so that outcomes from research immediately transform into practice.
- > Generate empirical data that can advance and transform educational practice.
- > Advocate and utilise participatory research methodologies to ensure that the research is «with» key stakeholders and not «about» them.
- > Ensure that the research addresses topics relevant for the kindergarten sector, rarely discussed in kindergarten research, and often unacknowledged in linguistic environments.
- > Initiate dialogues, thinking and actions to support the knowledge production and to change practices.

## Key words

Bildung	Organisation and leadership
Diversity	Exploration, play and learning
Sustainability	Professional development

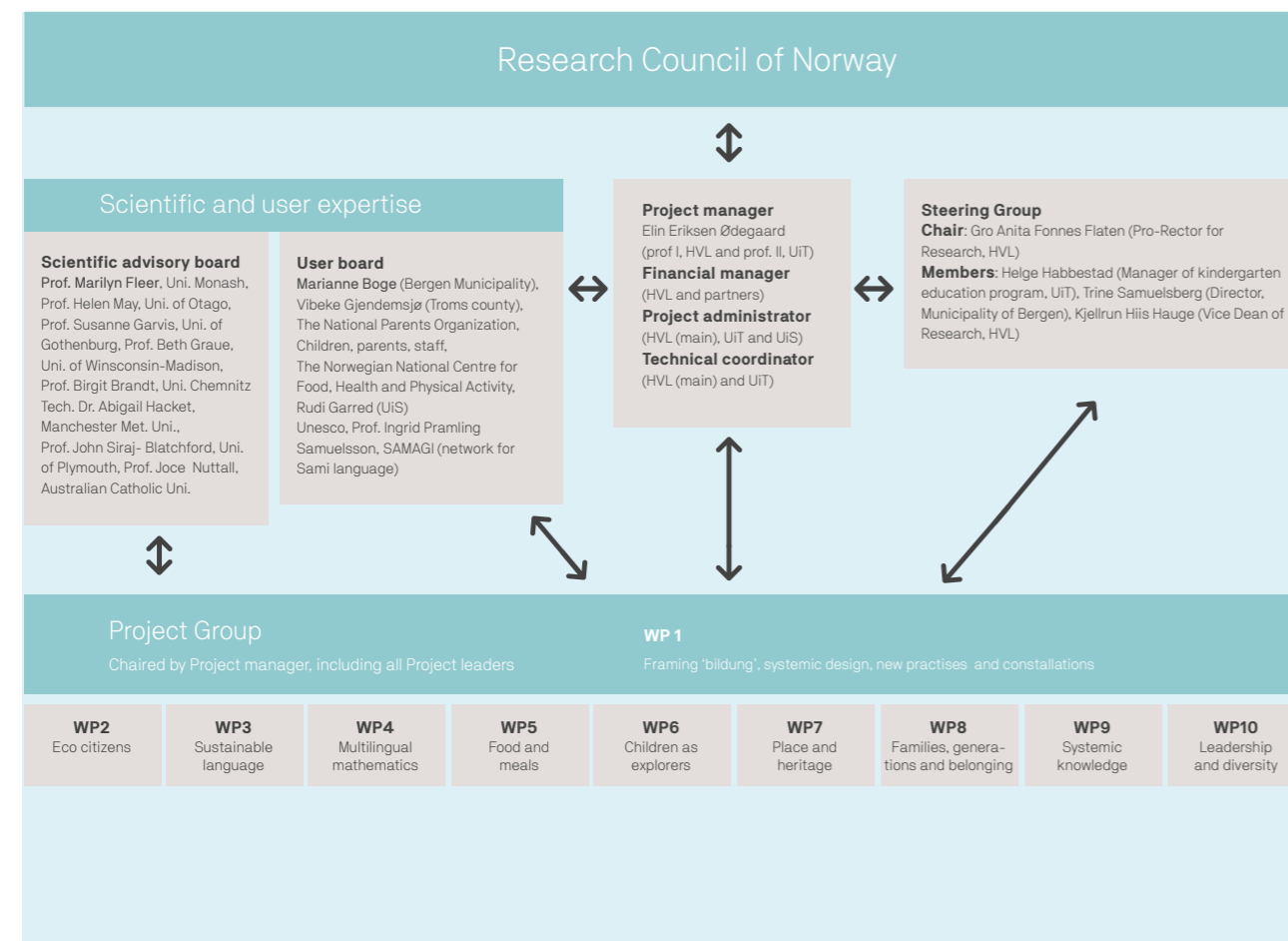




# Organisation

The administrative and organisational structure will contribute to the highest possible standard of research. To support this, three advisory boards with different functions will support the leader team of the centre:

1. The **Steering Group** will oversee the research centre, provide advice and ensure that protocol is followed.
2. The **Scientific Advisory Board** will support the academic work of the Work Packages (WPs) and the centre.
3. The **User Board** will provide input to the WPs about needs of different participants and about the development of participatory methodologies.
4. The **KINDknow leader team** consist of one person from each WP. Each WP will also have at least one more person in the core team to make sure that the leader team meets at key stages during the course of developing the centre and will be involved in strategic decisions. The leader team will meet regularly in order to share experiences and make the decisions necessary to develop the centre.



# Staff, leader team and extended research milieu

**Director:** Elin Eriksen Ødegaard  
**Coordinator:** Thea Johanne Kopperud  
**Professor II, 2018-2019:** Marilyn Fleer

The centre has organized its research projects into ten Work Packages with one or two team leaders responsible for each Work Package (WP). The team leaders form the basis of research in the centre and will receive extra R&D from the NFR. Today, of these researchers, there are five with professorships and two with lecturer competence. Several researchers, students and partners will be involved in research assignments through research groups and work packages.

**Team leaders:** Marianne Presthus Heggen (HVL), Barbara Sageidet (UiS), Carola Kleemann (UiT), Edit Bugge (HVL), Tamsin Meaney (HVL), Hege Wergedahl (HVL), Liv Torunn Grindheim (HVL), Åsta Birkeland (HVL), Anne Myrstad (UiT), Øyvind Glosvik (HVL), Svein Ole Sataøen (HVL), Kari Ludvigsen (HVL), Dag Øyvind Lotsberg (HVL) and Alicja Sadownik (HVL).

In the autumn of 2018, 13 PhD candidates and two post-doctoral positions worked at the centre. This includes ten PhD positions from HVL, one PhD from UiS and two PhDs from UiT. Another two postdoc positions will be announced in 2019.

**Post Doc:** Aihua Hu (HVL) and Carola Kleemann (UiT).

**PhD positions:** Lea Marie Maison (UiS), Anita Tvedt Crisostomo (HVL), Svein-Erling Greiner (HVL), Solveig Marie Borgund (HVL), Hilde Birgitte Hjertager Lund (HVL), Maria-Rosa Raphaela Doublet (HVL), Dorota Lembrér (HVL), Marie Marcelle Hvidsteen Jansen (HVL), Hege Fimreite (HVL), Anne Grethe Sønsthagen (HVL), Sidsel Boldermo (UiT), Elena Merzliakova (UiT) and Johanna Birkeland (HVL).

## Research milieus connected to the centre:

The work packages are either a research group or connected to a broader institutional research group. The wider milieu is:

Barnehagefaglig forskningsgruppe (UiT),  
 BiA – Barne-hageforskning i Arktis (UiT).

BDA - Kindergarten as an arena for cultural formation (HVL), POP – Profesjon, organisasjon og politikk (HVL), The competent kindergarten – systemic knowledge creation and dissemination (HVL), Barns matematikk – The Mathematics of young children (HVL), Mat og måltider i skole og barnehage (HVL), Utdanning for bærekraft (HVL), NACHILITCUL – Nature in Children’s Literature and Culture (HVL), PETER– Political Economy in Teacher Education Research (HVL), Leiting i og av utdanningssystem (HVL)

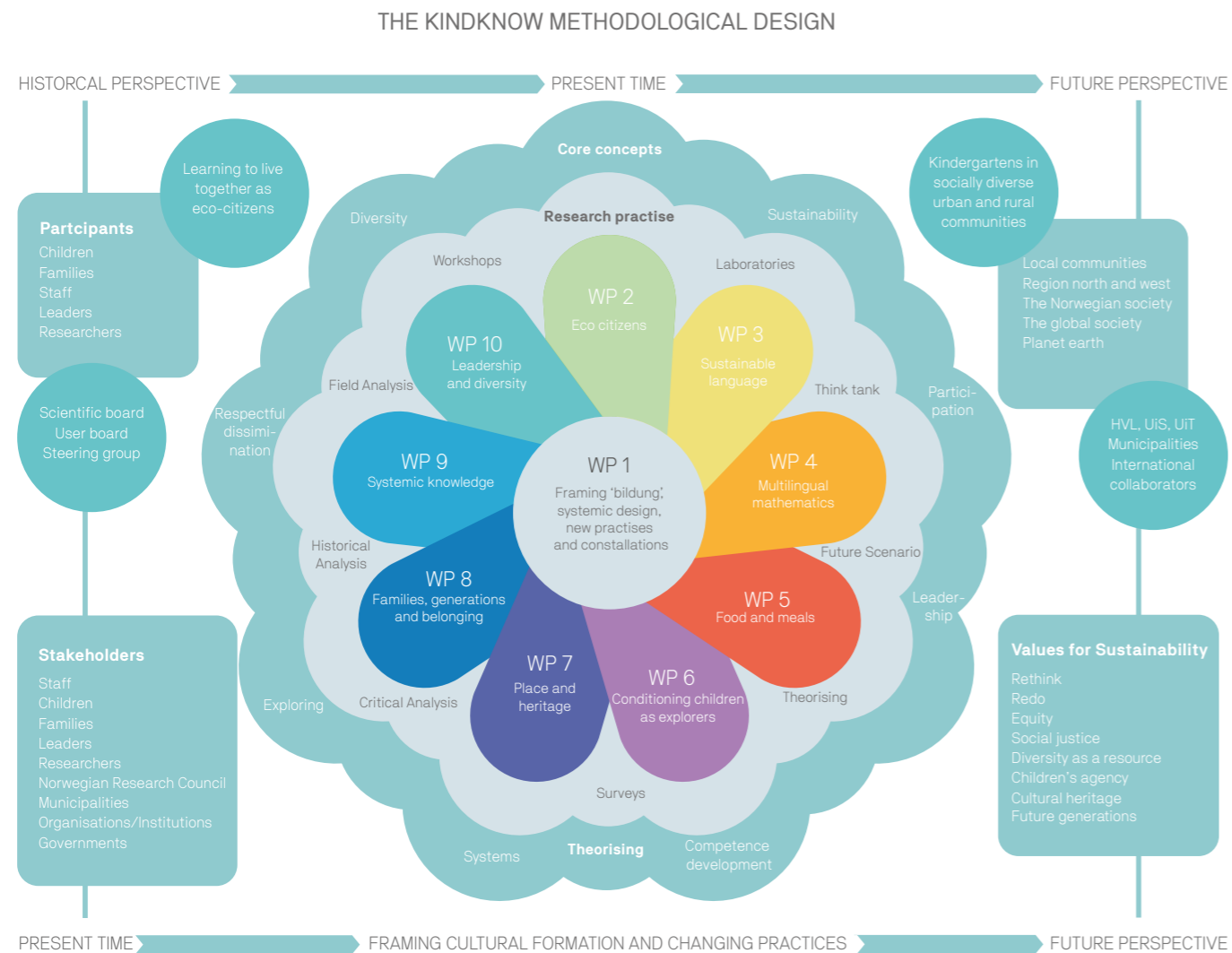
# Methodological design

To achieve its aims, the centre will provide opportunities for research with kindergartens and other partners, across diverse regions in Norway and internationally. As sustainability is a core value globally (UN) and in the new framework plan for kindergartens in Norway, to be integrated into all activities in kindergartens, there is a need for new research methodologies particularly participatory research methodologies that will inform and remake practices.

Some research projects will specifically aim to evaluate and develop intervention studies in which new practices will be developed and evaluated by children, families and staff in collaboration with researchers. For example, intervention projects will be conducted based on values for

sustainable futures and planet earth, such as rethinking and remaking practices explored in relationship to their possibilities for increased equity, social justice, diversity as a resource, children's agency, cultural heritage and belonging.

Research of this kind on kindergarten practices will explore how to co-create an educational setting that gives children possibility to be explorative and agentic and how children's exploration can contribute to their development. Our research will extend knowledge on how diversity can be considered a resource in kindergarten practices and in relation to kindergarten leadership.



Activities and results for 2018



# The opening of the KINDknow Centre

- Kindergarten Knowledge Centre for Systemic Research on Diversity and Sustainable Futures



From the opening of KINDknow. From left: School council of the municipality of Bergen; Roger Valhammer, Pro-Rector for Research; Gro Anita Fonnes Flaten, Professor and centre director; Elin Eriksen Ødegaard, rector of HVL; Berit Rokne and Dean at Faculty of Education, Arts and Sports (FLKI); Asle Holthe. Photo: Toril Berle Schalck / Bergen municipality.

KINDknow was officially opened on August 29th, 2018 in the auditorium "Mimes brønn" in Western Norway University of Applied Sciences on campus Kronstad. The opening was celebrated with a full-day seminar with a comprehensive program.

Among the topics were «What role does Early Childhood Education in theory and practice, globally and locally, play for issues of sustainability?» by the UNESCO Chair of Education for Sustainable Development for early Childhood, Professor Ingrid Pramling Samuelsson.



The team leaders at the opening conference. Photo: Barnehage.no



Professor Ingrid Pramling Samuelsson from the University of Gothenburg. Photo: Barnehage.no



State Secretary Rebekka Borsch speaking at the opening conference.



Director of the KINDknow centre Professor Elin Eriksen Ødegaard speaking at the opening conference. Team leaders in the background.



Associate Professor Siv Ødemotland entertaining the audience with glimpses from the baby theatre production «the gift».



Commissioner Roger Valhammer from the municipality of Bergen.

# The program for the opening of the KINDknow Centre

09.00	Opening ceremony	
	Section 1 - Official Opening Speeches	
	Rector HVL, Berit Rokne	
	State Secretary for Minister of Research Rebekka Borsch (Venstre [the Liberal Party of Norway])	
09.35	Director of The KINDknow Research Centre, Professor Elin Eriksen Ødegaard	<i>Sustainability or post-sustainability is that the question? Theoretical underpinnings, values and aims for designing research in the KINDknow Centre for Systemic Research for Diversity and Sustainable Futures</i>
	The Core Research Team present central commitments and tasks for research	<i>Pecha Kucha Presentation What do we aim to explore and find? And how will we contribute to the development of new knowledge?</i>
	Section II - International Key Notes and greetings from cooperation partners	
10.00	UNESCO Chair of Education for Sustainable Development for early Childhood, Professor Ingrid Pramling Samuelsson	<i>What role does Early Childhood Education in theory and practice, globally and locally, play for issues of sustainability?</i>
	City Counselor for Kindergarten, school and sports Roger Valhammer	<i>Opening greeting</i>
	Kindergartens in the Municipality of Bergen	<i>Video greeting</i>
	Dean Sonni Olsen UiT - The Arctic University of Norway	<i>Opening greeting</i>
	Dean Elaine Munthe University of Stavanger	<i>Opening greeting</i>
	Break - refreshments	
	Section II continues - International Key Notes	
11.00	Post Dr. Abigail Hackett, Manchester Metropolitan	<i>Young children moving in time, place and more-than-human worlds</i>
11.30	Professor and Foundation Chair for Early Childhood, Marilyn Fleer, Monash University, Oxford University/ Professor II HVL - KINDknow Center for Systemic Research for Diversity and Sustainable Futures	<i>Productive contradictions between play and learning: Conceptual playworlds as a source of development for young children</i>
12.00	Lunch	<i>Lunch will be served for invited guests</i>
	Key notes from KINDKNOW Researchers	
13.00	Professor Kari Ludvigsen (HVL) & PhD student Hege Fimreite (HVL)	<i>Leadership and organization in kindergarten: Central research challenges</i>
13.20	Professor Tamsin Meaney (HVL)	<i>Digitalising mathematics learning opportunities with a focus on multilingual children: What do we know and what do we need to know?</i>
13.35	Professor Hege Wergedahl (HVL)	<i>Food and meals in kindergartens - some challenges</i>
13.50	Associate professor Åsta Birkeland	<i>Temporal settings in Kindergarten: A lens to trace historical and current cultural formation ideals?</i>
	Greetings, comments, responses from cooperating partners, voices from the ECEC Sector and ECEC students	
	Collage	<i>Scenes from international cooperation</i>
	Associate professor Li Minyi, Beijing Normal University	<i>Greetings from Beijing Normal University</i>
	Honoratte M. Kashale, FUB	<i>Commentary from the National Parents Organisation</i>
	Professor Kjetil Børhaug, UiB	<i>Commentary about some aspects of Norwegian ECEC Research</i>
	Professor Emiratas Berit Bae, OsloMet	<i>Commentary from Norwegian ECEC Research</i>
	Greetings from the World Organisation for Early Childhood Education (OMEP)	
	Open microphone from other guests and the audience	<i>Questions, Commentaries and Greetings</i>
	Preservice teachers from kindergarten teachers education	<i>The Kindergarten teacher crates conditions for the future of children's institutional lives. What kind of Kindergarten do they wish for? What will the students work for?</i>
14.45-15.00	Closing ceremony with a surprise for the researchers, guests and audience by Associate Professor Siv Ødemotland	<i>The Gift - glimpse from a baby theatre production</i>

## Publications

This autumn, KINDknow researchers have published articles in several different journals and books. The themes vary from mathematics and digital games to children's access to urban gardens. Team leaders, Postdoctoral Fellows and Doctoral Research Fellows (PhDs) have contributed to the written publications.

### Publications:

- > Scientific articles (11)
- > Scientific Chapters in peer reviewed books (4)
- > Introduction in peer reviewed books (1)
- > Popular scientific articles (2)
- > Websites (information material) (1)



### Scientific articles (11)

KINDknow researchers have published eleven articles in peer reviewed journals.

1. **Birkeland, Johanna** "Å lære et håndverk": Pedagogikk læreres perspektiver på observasjon i barnehagelærer-utdanningen. *Nordic Journal of Pedagogy and Critique* 2018 (2387-5739) Vol. 4, s. 154-169  
**Cristin publikasjons-ID:** 1648239 **Institusjon:** HVL
2. **Birkeland, Åsta** Temporal settings in Kindergarten: a lens to trace historical and current cultural formation ideals. *European Early Childhood Education Research Journal* 2018 (1350-293X) Volum 27.(1) s. 53-67  
**Cristin publikasjons-ID:** 1643306 **Institusjon:** HVL
3. **Birkeland, Åsta; Ødemotland, Siv** Disorienting Dilemmas - The Significance of Resistance and Disturbance in an Intercultural Program within Kindergarten Teacher Education. *Integrative Psychological and Behavioural Science* 2018 (1932-4502) Vol. 52 (3), s. 377-387  
**Cristin publikasjons-ID:** 1585737 **Institusjon:** HVL
4. **Fosse, Trude; Lange, Troels; Lossius, Magni Elen Hope; Meaney, Tamsin** Mathematics as the Trojan horse in Norwegian early childhood policy? *Research in Mathematics Education* 2018 (1479-4802) Vol. 20 (2), s. 166-182  
**Cristin publikasjons-ID:** 1599704 **Institusjon:** HVL
5. **Grindheim, Liv Torunn** Beyond uniform reproduction: Exploring children's imaginative play through the lenses of their teacher. *Contemporary Issues in Early Childhood* 2018 (1463-9491), s. 1-12  
**Cristin publikasjons-ID:** 1595342 **Institusjon:** HVL
6. **Lange, Troels; Meaney, Tamsin** Talking about mathematics in two languages: Can parental views inform the development of digital games for young children? *Nordisk matematikdidaktikk* 2018 (1104-2176) Vol. 23 (4), s. 203-223  
**Cristin publikasjons-ID:** 1640748 **Institusjon:** HVL
7. **Pesch, Anja Maria** Syn på flerspråklighet som diskursive vilkår for barnehagens samarbeid med foreldre til flerspråklige barn. *NOA. Norsk som andrespråk* 2018 ;Volum 34.(1/2) s. 158-188  
**Cristin publikasjons-ID:** 1658812 **Institusjon:** UIT

8. **Sadownik, Alicja R.** Belonging and participation at stake. Polish migrant children about (mis)recognition of their needs in Norwegian ECECs. *European Early Childhood Education Research Journal* 2018 (1350-293X), s. 956-971  
**Cristin publikasjons-ID:** 1622000 **Institusjon:** HVL

9. **Sageidet, Barbara Maria; Almeida, Sylvia Christine; Dunkley, Ria** Children's access to urban gardens in Norway, India and the United Kingdom. *International Journal of Environmental and Science Education* 2018 (1306-3065) Vol. 13 (5), s. 467-480  
**Cristin publikasjons-ID:** 1655508 **Institusjoner:** MU-BPC, UoG, UIS

10. **Sønsthagen, Anne Grethe** «Jeg savner barnet mitt». Møter mellom somaliske mødre og barnehagen. *Nordic Journal of Comparative and International Education (NJCIE)* 2018 (2535-4051) Vol. 2 (1), s. 55-71  
**Cristin publikasjons-ID:** 1594819 **Institusjon:** HVL

11. **Tait, K.; Sweller, N.; Carter, M.; Fung, F.; Hu, Aihua; Djajic, J. A** Preliminary Study of the Internal Consistency and Validity of the Traditional Chinese Adaptation of the Impact on Family Scale. *International Journal of Special Education* 2018 (0827-3383) Vol. 33 (1), s. 77-93  
**Cristin publikasjons-ID:** 1578536 **Institusjoner:** MACQ, ECNUS, TUoHK, HVL

### Scientific Chapters in peer reviewed books (4)

KINDknow researchers have published four scientific publications in peer-reviewed books and one introduction in a peer-reviewed book this autumn.

1. **Hauge, Inge Olav; Kacerja, Suela; Lange, Troels; Lie, Johan; Meaney, Tamsin; Severina, Elena.** Young children's engagement with mathematics: Expanding teacher educators' views. I: *Mathematics education in the early years. Results from the POEM3 conference 2016.* Springer Publishing Company 2018 ISBN 978-3-319-78220-1. s. 3-25  
**Cristin publikasjons-ID:** 1599539 **Institusjoner:** HVL, UIB
2. **Helenius, Ola; Johansson, Maria L; Lange, Troels; Meaney, Tamsin; Wernberg, Anna.** Differential Enhancement in Mathematical Pre-School Class Activities. I: *Inside the Mathematics Class: Sociological Perspectives on Participation, Inclusion, and Enhancement.* Springer Science+Business Media B.V. 2018 ISBN 978-3-319-79044-2. s. 119-144  
**Cristin publikasjons-ID:** 1616319 **Institusjoner:** MAH, Ltu, Gu,
3. **Lembrér, Dorota; Kacerja, Suela; Meaney, Tamsin.** Preservice teachers recognising and responding to young children's engagement with mathematics. I: *Mathematics education in the early years. Results from the POEM3 conference 2016.* Springer Publishing Company 2018 ISBN 978-3-319-78220-1. s. 27-46  
**Cristin publikasjons-ID:** 1599695 **Institusjon:** HVL
4. **Sadownik, Alicja R.; Ødegaard, Elin Eriksen.** Early Childhood Education and Care in Norway: Cultural historical context, new regulations and perceived quality. I: *International Perspectives on Early Childhood Education and Care - Early Childhood Education in the 21st Century vol 1.* Routledge 2018 ISBN 9781138303935. s. 143-153  
**Cristin publikasjons-ID:** 1548369 **Institusjon:** HVL

### Introduction in peer reviewed books (1)

1. **Garvis, Susanne; Ødegaard, Elin Eriksen.** Introduction. I: *Nordic Dialogues on Children and Families.* Routledge 2018 ISBN 9781138673397. s. 1-12  
**Cristin publikasjons-ID:** 1565474 **Institusjoner:** UIT, Gu, HVL



## Popular scientific articles (2)

Two KINDknow researchers have contributed to popular science articles in the December issue of «Barnehagefolk». Alicja Sadownik writes about children sharing experiences as newcomers in the Norwegian kindergarten, while Anne Myrstad writes about relationships in childrens environment.



1. **Myrstad, Anne** Relasjoner i omgivelsene - vilkår for barns oppnåelse av agentskap. Barnehagefolk 2018 (1500-6905) Vol. (4), s. 74-77

**Cristin publikasjons-ID:** 1642282  
**Institusjon:** UIT

2. **Sadownik, Alicja R.** Når barn forteller om å være ny i den norske barnehagen. Tilhørighet og deltagelse står på spill når migrantbarn begynner i den norske barnehagen.

Barnehagefolk 2018 (1500-6905) Vol. (4), s. 38-43

**Cristin publikasjons-ID:** 1651886  
**Institusjon:** HVL



## Websites and blogs (1)

1. **Ødegaard, Elin Eriksen** Forskning på barns vegne - om en bærekraftig framtid.

**Cristin publikasjons-ID:** 1568423 **Institusjon:** HVL

## Seminars, conferences and presentations

The presentations this autumn have ranged from scientific lectures in international conferences like IRECE (International Research in Early Childhood Education) to lectures and conversations for local kindergarten teachers, like the planning day for kindergartens in Fana and Ytrebygda, Bergen. Guests have also been enlightening us at the KINDknow centre, contributing to interesting discussions.

### Seminars, conferences and presentations

- > Keynotes and guest lectures at Nordic and International conferences (7)
- > Scientific and academic lectures / panel (11)
- > Popular science lectures (6)
- > Posters from the opening conference (2)



Director of the KINDknow Centre Elin Eriksen Ødegaard was Keynote Speaker at the IRECE conference held in Northeast Normal University, Changchun, China in September. Here with partners from Monash University, Marilyn Flear and Liang Li, as well as Mariane Hedegaard and Zeth Chacklin from Copenhagen and kindergarten staff from Changchun.

### Keynote speakers and guest lectures at Nordic and International conferences (7)

This autumn KINDknow researchers have been invited to deliver seven guest lectures and lectures as keynote speakers in Nordic and international conferences.

WHEN	WHERE/ ORGANIZER	ARRANGEMENT	PLACE	PREVALENCE	INVITED	WHO	TITLE
14-16 September	Monash University & North East China Normal University	IRECE - International Research Early Childhood Education	Changchun	International	yes	Ødegaard, Elin Eriksen	The Global and Local Citizen of the Future -Formative Development of life skills.



19 September	Beijing Normal University	Guest lecture for PHD students	Beijing	International	yes	Ødegaard, Elin Eriksen	Cultures of Sustainability - the 'glocal' model of the teacher and formative development of the child
26-28 September	Københavns Profesjonsuniversitet	Oppstartsmøte, Nordisk prosjekt for utdanning for bærekraft	København	Nordic	yes	Heggen, Marianne Presthus	Utdanning for bærekraftig utvikling i Norge
12 October	HVL, BNU, Den norske ambassaden i Beijing	Det norske kongeparets statsbesøk i Kina	Dunhuang, Gansu-provinsen	International	yes	Birkeland, Åsta; Li, Minyi	Building a sustainable future for our children in early childhood education - China meets Norway
26 October	Nanjing Normal University	Chen Heqin forelesning ved Nanjing Normal University (guest lecture)	Nanjing	International	yes	Birkeland, Åsta	Education for Cultural Sustainability and Global Awareness
26 October	Nanjing Normal University	Chen Heqin forelesning ved Nanjing Normal University (guest lecture)	Nanjing	International	yes	Birkeland, Åsta	International Cooperation within Early Childhood Education. Fortifying preconceptions or transformation of knowledge
8 November	Københavns Profesjonsuniversitet	International week at KP	København	International	yes	Heggen, Marianne Presthus	"Is this the end of the world?" A talk about how we can meet the urgent challenges of the future without freaking out.

## Scientific and academic papers and panels (11)

The KINDknow researchers presented 11 scientific and academic lectures at different conferences and seminars.

Five of the lectures had an international prevalence and two had a Nordic prevalence.

WHEN	WHERE/ ORGANIZER	ARRANGEMENT	PLACE	PREVALENCE	INVITED	WHO	TITLE
28-30 August	Faculty of Ed. forChildren and Spec Needs, Univers.of Debrecen	28th EECERA Conference 2018, 'Early Childhood Education, Families and Communities'	Budapest	International	no	Sageidet, Barbara Maria; Almeida, Sylvia Christine; Dunkley, Ria	Children's access to urban gardens in Norway, India and in the United Kingdom.
14-16 September	Monash University and North-east Normal University	IRECE - International Research Early Childhood Education	Changchun	International	yes	Hu, Aihua; Ødegaard, Elin Eriksen.	Play and/or learning:Comparative analysis of two dominant concepts in curriculum guidelines for ECE in Norway, Finland, China and Hong Kong
17 September	North East Normal University and Monash University	PANEL Discussion on Play Learning and Good Life for PhD students	Changchun	International	yes	Ødegaard, Elin Eriksen; Fleer, Marily; Hedegaard, Mariane; Chaiklin, Zeth; Li, Liang.	Panel on Play, Learning & Good Life - International Research on Early Childhood Education -
26 September	Høgskulen på Vestlandet, campus Haugesund	Framtidens barnehage - samarbeid for bedre kvalitet (Guest lecture)	Haugesund	Norwegian	yes	Grindheim, Liv Torunn	Uteleik i den profesjonaliserte barndomen
16 October	BNU and HVL	Seminar om komparativ pedagogikk	Beijing Normal University	International	yes	Birkeland, Åsta	Conditions for Early Childhood Education practices in Norway
31 October	University of Stavanger	Smartby	Jernaldergården, University of Stavanger	Norwegian	yes	Sageidet, Barbara Maria	Children and a smart sustainable city
14-16 November	Norsk Natur Nettverk	Naturfagsutdannerkonferansen	Hell	Norwegian	yes	Heggen, Marianne Presthus	"Vi er alle natur" - En analyse av små barns utsagn om natur
16-17 November	The Maria Grzegorzewska University	Wczesna Edukacja między teoria i praktyka	Warszawa	National (not Norwegian)	yes	Sadownik, Alicja R.	Profesjonalny, refleksyjny - o edukacji nauczyciela przedszkolnego w Norwegii. Research-based, profession-oriented and practice-related - about kindergarten teacher education in Norway

28 November	Senioruniversitetet i Bergen	Guest lecture	Bergen	Norwegian	yes	Birkeland, Åsta	Små keisere eller verdensborgere. På spor etter dannelsesideal i kinesiske barnehager
3-4 December	Inland University of Applied Sciences	Teacher Education and Diversity	Hamar	Nordic	yes	Hu, Aihua	ESL/EFL student teachers' professional development in an international immersion program: A university in Hong Kong as a case
3-4 December	Inland University of Applied Sciences	Teacher Education and Diversity	Hamar	Nordic	yes	Skoglund, Ruth Ingrid; Birkeland, Åsta; Hu, Aihua	Identifying crucial aspects for students' formation as glocal teachers in an intercultural program within ECE: A pilot study

## Popular science lectures (6)

We were invited to give six popular science lectures, all with Norwegian prevalence.

WHEN	WHERE/ ORGANIZER	ARRANGEMENT	PLACE	PREVALENCE	INVITED	WHO	TITLE
10 September	De Enestående Barnehager	Planleggingsdag for barnehager i Fana/ Ytrebygda	Bergen	Norwegian	yes	Heggen, Marianne Presthus; Grindheim, Liv Torunn.	Utdanning for bærekraft - ikke som enkeltstående men som enestående barnehager
11 September	Landsforening for offentlige pensjonister	Medlemsmøte	Bergen	Norwegian	yes	Birkeland, Åsta	Små keisere eller verdensborgere? Spor av dannelsesideal i kinesiske barnehager
20 September	UiT - Norges arktiske universitet	Forskningsdagene 2018	Alta	Norwegian	yes	Hauan, Marit Anne; Boine, Mari; Josefsen, Eva; Hætta, Odd Mattis; Kleemann, Carola Babette.	Mari Boine - Fra oppvekst til verdensstjerne
4 October	Fylkesmannen i Finnmark	Barnehagekonferanse for samiske barnehager og barnehager med samisk avdeling	Alta	Norwegian	yes	Kleemann, Carola Babette.	Forskning på språk i barnehagen
12-14 October	Norges sosiale forum	Globaliseringskonferansen	Kulturkirken Jacob og Doga arena, Oslo	Norwegian	yes	Ødegaard, Elin Eriksen.	Håp for framtida gjennom barns utdanning, omsorg og danning Deltakelse i paneldebatt i regi av OMEP Norge
9 November	Pioner Barnehager	Planleggingsdag for Pioner barnehager	Oslo	Norwegian	yes	Heggen, Marianne Presthus.	Bærekraftige pionerer - utdanning for bærekraft i Pioner barnehager

## Posters from the opening conference (2)

WHEN	WHERE/ ORGANIZER	ARRANGEMENT	PLACE	WHO	TITLE
29. August	Høgskulen på Vestlandet,	Åpningskonferanse for BARNkunne - senter for barnehage-relevant forskning	Bergen	Wergedahl, Hege; Bjørkkjær, Tormod; Aadland, Eli Kristin	Hvorfor spiser vi ikke mere grønnsaker? Bærekraftige og helsefremmende måltider i barnehagen
29. August	Høgskulen på Vestlandet,	Åpningskonferanse BARNkunne - Senter for barnehage-relevant forskning	Bergen	Heggen, Marianne Presthus; Sageidet, Barbara Maria; Bergan, Veronica; Crisostomo, Anita Tvedt; Goga, Nina; Grindheim, Liv Torunn; Krempig, Inger Wallem; Lynngård, A.M.; Maison, Lea Marie; Utsi, Tove Aagnes	Å være og bli øko-borger.

## Applications

This year seven applications have been submitted and one is already approved.

### Submitted (6)

KINDknow researcher Alicja Sadownik made this year to her «application year» and has been working on five applications. Four of the submitted applications (EARLYBIRD, TEACHER, SCORE, BRIDGE) are developed in cooperation between Work Package 6 (conditioning children as explorers) and Work Package 8 (families, generations & belonging). RIGHTNOW is from WP8. KINDknow researcher Marianne Presthus Heggen and Ida Lervik Midtbø have been working on the FINNUT application.

Source of funding	Title acronym	HVL's role	Budget for HVL	Level	Type of application
EEA grants Norsk: EØS midler	EARLYBIRD: Enabling early childhood education to prevent bullying, enhance peer communities and social inclusion in children's and parental groups	Partner	200.000 EURO	Pre-proposal	Regional cooperation: Sharing good practice and capacity building
	RIGHT NOW: The rights of the Children in Alternative Care.	Partner	80.000 EURO	Pre-proposal	
	TEACHER: Towards more inclusive societies: Strengthening belonging among children and families from diverse backgrounds in institutions of early childhood education (ECE)	Partner	423.750 EURO	Pre-proposal	Bilateral research cooperation
H2020	SCORE: Spreading Excellence and sustainable profiling of Early Childhood Education in Croatia	Partner	322.500 EURO	Pre-proposal	CSA Cooperation supportive Action
NordForsk	BRIDGE: Building and strengthening a sense of well-being and belonging in children and their families from Diverse backgrounds	Project leader	3.000.000 NOK	Pre-proposal	RIA Research Innovation Action
FINNUT	Begrip – på vei mot en ny pedagogikk for bærekraftig utvikling	Project leader	7.770.000 NOK	Full proposal	Innovasjonsprosjekt i offentlig sektor



Alicja Sadownik and Elin Eriksen Ødegaard at NECA network meeting at the University of Gothenburg to seek Nordic partners for the applications sent in autumn 2018.

### Approved applications (1)

At the end of November 2018 NORCE was approved for their application for evaluation of the implementation of the Framework Plan for Kindergartens. The evaluation, funded by the Directory for education (UDir), brings together three research environments that will strengthen each other in the research in the kindergarten field. These research communities are based in NORCE, the University of Bergen and KINDknow, center for kindergarten research at Western Norway University of Applied Sciences, and from the University of Agder. Anne D. Homme at Norce leads the project. Three researchers Kari Ludvigsen, Dag Øyvind Lotsberg and Svein Ole Sataøen from KINDknow are involved.



From left: Dag Øyvind Lotsberg, Kari Ludvigsen and Svein Ole Sataøen.



## In the Media

This year the KINDknow centre and associated researchers have made several appearances in national news and campus news at the universities. The main topics have been the opening of the KINDknow centre in August and the Norwegian Royal State visit to China in October 2018. Also: Two KINDknow researchers have been involved in preparing a report on the kindergarten teacher role in a professional perspective in December and three KINDknow researchers have been involved in an approved application with NORCE for evaluation of the Framework Plan for kindergartens.

### Interviews (3)

1. **Birkeland, Åsta** TV2 nyhetene.  
Cristin publikasjons-ID: 1635058 Institusjon: HVL
2. **Birkeland, Åsta** Kan norske barnehager lære noe av Kina?  
Cristin publikasjons-ID: 1635061 Institusjon: HVL
3. **Birkeland, Åsta** Dagsrevyen.  
Cristin publikasjons-ID: 1635043 Institusjon: HVL



KINDknow researcher Åsta Birkeland and Mineyi Li in dialogue lecture on sustainability with The King, The Queen and the rest of the audience under the Norwegian Royal couple's visit to China. Photo: Sigurd Sandvold



KINDknow scientists in dialogue and collaboration with Chinese researchers and kindergartens on sustainability during the royal state visit to China. The queen and the king were listeners. Students from BNU and HVL participated. The king and queen heard about the long-standing research and education collaboration between HVL and Chinese researchers and kindergarten teacher education schools. They met bachelor and master students and researchers from HVL.



Photo: The Royal Norwegian Embassy in Beijing



The screenshot shows the top of a news article on the website barnehage.no. The page has a navigation bar with 'Innhold', 'Barnehagejobb', 'Tips oss', and 'Nyhetsbrev'. A search bar is on the right. The main image shows three women talking. Below the image is a blue box with the word 'FORSKNING'. The article title is 'Stolt over å åpne nytt forskningscenter med skyhøye ambisjoner'. Below the title is a short text: 'Elin Eriksen Ødegaard (midten) har høye ambisjoner for BARNkunne - senter for barnehagerelevant forskning. Her er hun sammen med med byråd Roger Valhammer og rektor ved HVL, Berit Rokne under onsdagens åpning. Foto: Øyvind Johansen'. The URL at the bottom of the screenshot is 'www.barnehage.no/artikler/stolt-over-a-apne-nytt-forskningssenter-med-skyhoye-ambisjoner/444822'.

Screenshot from : [www.barnehage.no/artikler/stolt-over-a-apne-nytt-forskningssenter-med-skyhoye-ambisjoner/444822](http://www.barnehage.no/artikler/stolt-over-a-apne-nytt-forskningssenter-med-skyhoye-ambisjoner/444822)

### News articles (6)

1. 29.8.2018 «Sentrale i nytt senter for barnehageforskning»  
[https://uit.no/nyheter/artikkel?p\\_document\\_id=589981&p\\_dim=88183](https://uit.no/nyheter/artikkel?p_document_id=589981&p_dim=88183)
2. 29.8.2018 «Stolt over å åpne nytt forskningscenter med skyhøye ambisjoner»  
<https://www.barnehage.no/artikler/stolt-over-a-apne-nytt-forskningssenter-med-skyhoye-ambisjoner/444822>
3. 13.10.2018 «Norske barnehager har noe å lære av Kina»  
<https://www.utdanningsnytt.no/nyheter/2018/oktober/--norske-barnehager-har-noe-a-lare-av-kina/>
4. 15.10.2018 «Har samarbeidet om barnehage i 15 år - mener Norge og Kina har noe å lære av hverandre»  
<https://www.barnehage.no/artikler/har-samarbeidet-om-barnehage-i-15-ar-mener-norge-og-kina-har-noe-a-laere-av-hverandre/448705>
5. 5.12.2018 «Ny rapport: Reiser kritiske spørsmål rundt flere sider av barnehagelærrollen»  
<https://www.barnehage.no/artikler/ny-rapport-reiser-kritiske-sporsmal-til-flere-sider-av-barnehagelaerrollen/452854>
6. 14.12.2018 «HVL-forskere deltar i evalueringen av ny rammeplan for barnehager»  
<https://www.hvl.no/aktuelt/hvl-forskere-deltar-i-evalueringen-av-ny-rammeplanen-for-barnehager/>



UiT / NORGES ARKTISKE UNIVERSITET

## Sentrale i nytt senter for barnehageforskning

29.08.18 Stig Brøndbo (Oppdatert: 30.08.18 13:34)

Forskere fra UiT og universitetsbarnehagene i Tromsø blir sentrale i et helt nytt forskningsnettverk, *BARNkunne – senter for barnehagekunnskap*.





Foto: Inger... mpi

Førsteamanuensis Carola Kleemann presenterte onsdag hovedpunktene for forskningsarbeidet innen språk og språkutvikling som hun skal lede i det nye forskningsenteret BARNkunne. Foto: Stig Brøndbo

– Endelig har vi fått på plass et barnehagefaglig forskningsenter og et nasjonalt og internasjonalt nettverk for forskning på barnehagesektoren, og jeg er glad for at UiT og våre universitetsbarnehager er en del av dette, sier Sonni Olsen, dekan ved Fakultetet for humaniora, samfunnsvitenskap og lærerutdanning, UiT Norges arktiske universitet.

**Samarbeid**  
Senteret BARNkunne – senter for barnehagekunnskap åpnet i Bergen onsdag, og blir et nav for forsknings- og endringsaktiviteter i barnehagesektoren, både nasjonalt og internasjonalt. Senteret er et samarbeid mellom Høgskolen på Vestlandet, Universitetet i Stavanger og UiT Norges arktiske universitet, og har



– Lokal kultur og historie, landskap, klima og værforhold er alle faktorer som påvirker livet i en barnehage. Vi skal se nærmere på hvordan, sier Anne Myrstad, som skal lede en av ti arbeidsgrupper knyttet til det nye senteret. Foto: Stig Brøndbo

Screenshot from: [uit.no/nyheter/artikkel?p\\_document\\_id=589981&p\\_dim=88147](http://uit.no/nyheter/artikkel?p_document_id=589981&p_dim=88147)



KINDknow researchers Hege Fimreite (HVL) and Anne Myrstad (UiT) have been part of the expert group involved in preparing a report on the kindergarten teacher role in a professional perspective, handed over to the Minister of Education Jan Tore Sanner. Photo: Karin Hognestad (USN), Gerd Sylvi Steinnes (HVO) and Helene Berntsen Brennås (Trondheim municipality).



Researchers Anne Myrstad and Carola Kleemann (UiT) in the news talking about the KINDknow Centre and their Work Packages. Photos: The Arctic University of Norway.

## Public outreach



Hanne Værum Sørensen and PhD candidate Svein-Erling Greiner.



Researcher Åsta Birkeland introducing the board game at the National Science Week.

## Stands (2)

Arendalsuka is an annual political gathering in Norway that aims to strengthen the belief in political empowerment and democracy through an open debate and involvement. KINDknow was represented and the stand was among others visited by Bodil Fjelde the County Governor in Aust- og Vest- Agder, principal at HVL Berit Rokne and chairman of the board at HVL Arvid Hallén.

1. **Glosvik, Øyvind; Bjørkkjær, Tormod; Heggen, Marianne Presthus; Selås, Magnhild**  
Barnkunne - Presentasjon/bod under Arendalsuka 2018. Arendalsuka 2018 2018, 2018-08-13 - 2018-08-17  
**Cristin publikasjons-ID: 1657374 Institusjoner: UIA, HVL**

In September, KINDknow participated in the National Science Week in Bergen and introduced a prototype of a board game for children developed by the WP 6. This is an annual festival organized by the Research Council of Norway.

2. **Ødegaard, Elin Eriksen; Birkeland, Åsta; Ødemotland, Siv; Hu, Aihua; Skoglund, Ruth Ingrid; Greiner, Svein-Erling Tur - retur, Norge - Kina.**  
**Cristin publikasjons-ID: 1656750 Institusjoner: NTNU, HVL**



Researcher Marianne Presthus Heggen at Arendalsuka. Photo: Tormod Bjørkkjær.

## Websites and social media

KINDknow has its own website through HVL with information about the KINDknow centre in Norwegian and English. KINDknow also has a Facebook website where we post the newest events at the Centre. The Director also has a Twitter-account



## More activities

### KINDknow workshops and seminars (6)



Pictures from the workshop in Tromsø 19th- 21st of September.  
Photo: Bente Karlsen

**August 16**, Professor Marilyn Fleer, Monash University and professor II at KINDknow, visited “Barnehagefaglig forskergruppe” and WP7. They planned for the IRECE conference 2020 in Tromsø.

**September 19-21**, Workshop in Tromsø; kick-off for work package 7: KINDplace - past, present and future. Themes for the workshop: How do stories from the past shape our experience of the place? How to facilitate sensual and bodily encounters with history, topology, materiality, climate and weather conditions in a kindergarten context? How do the various site components work together and create conditions for how we sense a place? Participants in the workshop were: kindergarten researchers, subject teachers, students and kindergarten staff from the University kindergartens and archaeologist /conservator. The workshop will be carried out with kindergarten children in 2019.



Photo: Bente Karlsen

**October 12**, KINDknow researcher Åsta Birkeland, together with Minyi Li, Beijing Normal University, were responsible for the seminar «Building a sustainable future for our children in early childhood education - China meets Norway» during the Royal state visit to China (Dunhuang). Birkeland and Li had a presentation during the opening of the seminar where the royal couple were present.

**November 13**, Research seminar «The vital play and how to research it» with Professor Mariane Hedegaard, Emeritus from University of Copenhagen and Professor II at HVL. Play is again on the agenda in the Norwegian educational debate and in teacher education, knowledge of play in educational institutions such as kindergartens and schools is important. Questions raised at the seminar were: What is the knowledge base to play and how do we research play? What are the important research questions and how can we create new knowledge about play in educational institutions?

**December 4**, “Childhood, body and play cultures in transformation” was the theme of the research seminar at KINDknow this day. The purpose was to raise issues related to design and methodology in research. In collaboration with the research group “Methodologies for Nordic Childhood Research” (HVL), we received valuable inputs on research design and science theory from central Nordic children’s culture researchers, among others: Professor Gunn Engelsrud (Norwegian school of sport sciences and HVL), Professor Helle Skovbjerg (Design School Kolding), Professor Pauline von Bonsdorff (University of Jyväskylä), Professor Jorunn Spord Borgen (Norwegian school of sport sciences and HVL) and Professor Elin Eriksen Ødegaard. Participants from BIN- Norden Network (Nordic child culture research).



Professor Pauline von Bonsdorff, University of Jyväskylä, Finland and Professor Jorunn Spord Borgen, Professor II at HVL, in conversation in the seminar December 4.

**December 7**, OMEP (World Organization for Early Childhood Education) in collaboration with KINDknow held the seminar «Dialogue and sustainability in a global and local perspective» at campus Bergen, Western Norway University of Applied Sciences. Dr. Eunhye Park, the world president of OMEP visited KINDknow. Sustainable futures in global and local contexts and the contributions of Early Childhood and OMEP were discussed in the dialogues. Dr. Park was interested in the new Norwegian Framework plan for Kindergartens as sustainability is a key word in the framework plan. This is a great opportunity and how will we use it? Students, kindergarten teachers, teacher educators and researchers participated in the dialogues.



Dr. Eunhye Park visiting KINDknow for dialogues on sustainable futures. Here together with Elin Eriksen Ødegaard and Eli Bergsvik.



## KINDknow Research-forum (1)

**1. December 18:** The first Research-forum initiated by KINDknow was held at HVL, campus Bergen with the theme «What is kindergarten research?». Both PhDs, Postdocs and supervisors contributed to interesting thoughts, ideas and discussions. Among the topics that were raised, was the importance of analytic distance, critique and interdisciplinarity in the field and to avoid talking in echo chambers. This first forum was led by Postdocs Carola Kleemann (UiT) and Aihua Hu (HVL).

## Mid-term seminar (3):

- 1. December 11:** Elena Merzliakova (UiT).  
Reader: Pofessor Tiri Beate Bergesen Schei (HVL),  
Supervisor: Elin Eriksen Ødegaard (HVL) and Mikhail Gradovski (UiS).
- 2. December 11:** Dorota Lembrér (HVL).  
Reader: and Liv Torunn Grindheim (HVL) and Anita A. Wager, (VU, USA) Supervisor: Tamsin Meaney (HVL) and Troels Lange (HVL)
- 3. December 12:** Sidsel Boldermo (UiT).  
Reader: ass. Prof. Alicja Sadownik (HVL),  
Supervisor: Elin Eriksen Ødegaard (HVL) and Susanne Garvis, (GU, Sweden)

## Various topics (3)

- 1. October:** Birkeland and Li were responsible for the guidance of 10 Norwegian and Chinese students (mainly master students from HVL and NWNNU) who worked together to develop activities focusing on sustainability in Dunhuang kindergarten. These activities were shown during the Norwegian Royal state visit to the kindergarten.
- 2. November:** Regional scheme for competence development in kindergarten (ReKomp) is a completely new national scheme for quality initiatives in kindergartens. HVL has been given the responsibility of coordinating the network from the universities and the university colleges sector. KINDknow researcher Edit Bugge and Head of program for the kindergarten teacher education Margareth Eilifsen from HVL, lead the national network for the sector. ReKomp can provide new opportunities for collaborative kindergarten research if the parties in the scheme see such opportunities.
- 3. November:** Dr. Minyi Li, KINDknow's partner at Beijing Normal University took part in the celebration at the Norwegian Embassy in Beijing 27. November. Ambassador Geir O. Pedersen thanked her for her great effort on the professional kindergarten section during the royal state visit to China in October.



Elin Eriksen Ødegaard visiting Daxing kindergarten in September.



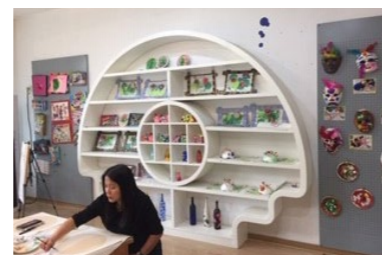
KINDknow researcher Edit Bugge and Margareth Eilifsen from HVL lead the national network for the universities and the university colleges sector that will work on ReKomp. Photo: Randi Neteland

## Visits and meetings

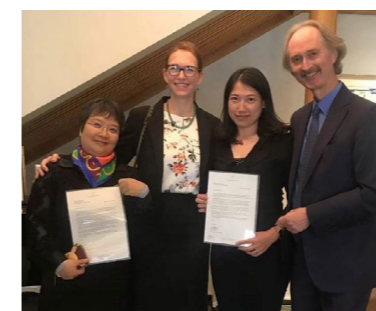
Various meetings and visits have taken place this autumn. Among the regular meetings are:

**Team leader meetings:** The team leaders for the work packages had meetings at Kronstad and via Skype every 14 days this autumn.

**IRECE 2020:** There have been regular planning meetings for hosting the International Research in Early Childhood Education Conference (IRECE) 2020 in Tromsø.



KINDknow researcher Aihua Hu visiting Daxing kindergarten, Beijing in September.



Ambassador Geir O. Pedersen thanked Dr. Minyi Li at the Norwegian Embassy in Beijing in November for organizing kindergarten visits and seminars in collaboration with HVL and KINDknow researcher Åsta Birkeland.



# Where are we heading?

## WP 1: Framing early childhood education – ‘Bildung’ – cultural historical and future scenario practices

**Team leader:** Elin Eriksen Ødegaard (HVL);

WP1 will continue to work on and evaluate the first efforts to establish activities and regular forums to meet the goals of the centre. Regular meetings for the team leaders are every 2 or 3 weeks and a regular KINDknow Research Forum is established. Postdocs and PhD students participate and lead these fora that are open to supervisors, team leaders and also open to a wider audience. These meetings and fora are central in building cultures for research within our field and profile. During 2019 we will work on building a chronological time line for the historical emergence of kindergarten knowledge where we question what characterizes this knowledge, especially in the period from 1970 until today. We build a comprehensive resource base of documents and photos to create meta knowledge. The WP cooperates with research groups and invited experts in the field. Two PhD students are engaged to provide historical sources, data and a web set up. Also questions like: What does the historical knowledgebase say and what does it mean for the development of knowledge relevant for the field today and for the future? will be investigated.

## WP 2: Being and becoming eco-citizens

**Team leaders:** Marianne Presthus Heggen (HVL) and Barbara Maria Sageidet (UiS)

Our work package has regular Skype meetings since we have members from Alta, Tromsø, Bergen and Stavanger. This autumn we have worked on the details of our research design. Among other things, we agreed to have focus on «food production» in our study. We also decided to have a start-up meeting in each kindergarten we are going to work with in our research, where the entire kindergarten should be involved. Right from the start we participated in a writing project for a special issue in NorDiNa (Nordic studies in science education). Our manuscript «Children as eco-citizens» is now accepted for publication in the spring. Liv Torunn Grindheim and Nina Goga have worked on a 2-minute film about the term “Children as eco-citizens”. Tove Aagnes Utsi and Veronica Bergan have prepared a flyer about the project for all participating kindergartens. Both researchers are actively working on organic cultivation in the kinder-

gartens. Marianne Presthus Heggen has been responsible regarding the applications for external project funds. At HVL in Bergen, she leads the research group «Education for Sustainability». Barbara Maria Sageidet leads a small research group «Sustainability, STEM and physical education» at the University of Stavanger. Tove Aagnes Utsi, Kari Wallem Bøe and Inger Wallem Krempig presented «Harvesting wild food - a pedagogical project in an Arctic kindergarten» at the «8th international outdoor education research conference», University of the Sunshine Coast, Australia. Our two PhD fellows, Anita Tvedt Crisostomo and Lea Marie Maison are making good progress and Lea has been studying in Mexico this fall.

## WP 3: Sustainable language practices in Norwegian kindergartens

**Team leaders:** Carola Kleemann (UiT) and Edit Bugge (HVL)

We are making good progress with our work. One of our main goals is to create a children’s language corpus. This requires a lot of preparatory work before we see the results. We had a meeting in Tromsø with colleagues who have been involved in working with corpora and children’s language corpora. We are also in dialogue with relevant sections at the University of Oslo (UiO) and other institutions about technical solutions and design. Through the research group «Children’s Language» at HVL we have received funding for the purchase of two GoPro cameras that can be used in the KINDknow centre. These cameras are used in the fieldwork that takes place in Lakselv, Finnmark County.

We are in the process of writing articles for publishing. In Lakselv we are in the preparation of a project strengthening Sámi language in the Sámi department. Cooperation with work package 7. Cooperation with kindergarten and Sámi business activity. We are working on a project application on NFR’s program for Sámi research III (SAMISK).

## WP 4: Multilingual mathematics: Using digital games to develop children’s mathematical languages.

**Team leader:** Tamsin Meaney (HVL)

During the first 6 months of the Centre for Kindergarten Knowledge, WP4 has been working on setting up collabo-

rations that will be implemented in the first half of 2019. The collaborations have revolved around organising data collection with families with multilingual children attending kindergartens in Bergen. Data will be collected in March 2019 and will provide an opportunity for developing the tools needed to conduct a multimodal analysis of young children’s use of mathematical language(s) with their parents at home. As well initial discussions have occurred with a multilingual kindergarten in Bergen about setting up a working relationship to jointly look at how digital games could be connected to work with mathematics.

International collaborations have also been developed with Carme Balaguer from Universitat Internacional de Catalunya who will be visit us for three months before the summer, 2019. As well, we have been in contact with our Russian collaborators led by Aleksander Veraksa, Lomonosov Moscow State University with our first joint publication to be submitted in the near future.

Our first publication for the project was published in a special issue on language diversity in mathematics education in Nordic Studies of Mathematics Education.

Last but not least, the first six months saw the offering and acceptance of a PhD stipend to Silje Christiansen, who began in January 2019.

## WP5: Food and meals in the kindergarten

**Team leader:** Hege Wergedahl

WP5 is connected to the research group Food and meals at schools and kindergartens. As part of the research group activity, we have had two presentations focusing on updated knowledge within the field of healthy and sustainable meals in the kindergarten. During the autumn 2018, the WP-leader participated in the recruitment of a PhD-student within the WP. The PhD-student, Baizhen Ciren, starts in February 2019 and the detailed planning of the project will be done in cooperation with the PhD-student.

During the autumn 2018, two researchers from WP2 and WP5 respectively have prepared a plan for a collaborative project between the two work packages, with the focus on a combined sustainable and health promoting aspects of growing vegetables in kindergartens. Research plan, interview guides and plan for observation are in progress.

WP5 also includes dissemination of already collected data from Norwegian kindergartens, and a paper is in progress and will be included in the Bloomsbury-anthology Transitions in Childhood and Youth.

## WP 6: Conditions for children as explorers

**Team leaders:** Liv Torunn Grindheim (HVL) and Åsta Birkeland (HVL)

WP 6 is elaborating established projects from the research project Children as explorer that was established in 2016.

In October 2018, WP6 strengthened the cooperation with Beijing Normal University, North West Normal University and kindergartens in Gansu province, China. Researchers from WP 6 were invited to take part in the Norwegian state visit to China by organizing kindergarten program and by leading and presenting at an ECE seminar about Education for Sustainable Futures in Dunhuang for His Majesty the King and Her Majesty the Queen.

One of the researchers from WP6 was also invited to give a lecture on Heqin Chen at Nanjing Normal University (NNU) for master and PhD students and staff at NNU. There is an established a contract with Springer for an anthology entitled Children’s Exploration and Cultural Formation. The editors are Mariane Hedegaard and Elin Eriksen Ødegaard. We organized a seminar on 14 November where all the contributors gave feedback to all the chapters.

WP 6 is also continuing dissemination and elaborating cooperation from fieldwork already done in Norwegian kindergartens.

In addition, we have made a huge effort to apply for external funding. In cooperation with WP8 Families, generations & belonging, we are involved in four applications: EARLYBIRD – EØS grant, TEACHER – EØS grant, SCORE – Horizon2020 and BRIDGE - NordForsk, sent autumn 2018. We are also involved in a Nordplus application; sent 1.02.2019 titled LUDOTORIUM, and are preparing for more applications.

The PhD candidate involved in WP6, has started his ethnographic fieldwork among students in their everyday life, at HVL.

WP6 is connected to the research group Kindergarten as an arena for cultural formation.

## WP 7: The methodology of place – in between local tradition and the development of place in kindergartens for the future

**Team leader:** Anne Myrstad (UiT)

During the 19th - 21st of September, there was a kick off for WP7- The methodology of place – in between local tradition and the development of place in kindergartens for the future. The kick off was presented with open lectures, workshops and research seminars. Participants in the lectures and workshops were kindergarten researchers, subject teachers, staff from University kindergartens (UbiT), students and archaeologist/conservator, administrative personnel, and Dr. Abigail Hackett (guest researcher at Manchester MET). The workshop that was arranged at the rock carvings field at Skavberget will be repeated for kindergarten children May 2019.

In autumn 2018, the working group's researchers at UiT have established cooperation with two university kindergartens in Tromsø (UbiT). Two of the researchers have participated in one of the kindergartens' projects throughout the autumn. In the second kindergarten, researchers will begin observation during spring - 2019. We participate regularly at UbiT meetings to inform about the work package. In addition, we are in the process of establishing a collaborative project with work package 3 in Finnmark. Autumn 2018, the head of the work package has prepared the plan for data management: Equipment for collecting data, a consent form for parents and staff, NSD application, data management plan, and application for storage for services for secure data management (TSD).

We are also in the process of preparing to host the International Research in Early Childhood Education (IRECE) conference in 2020. At the same time, we are working on getting administrative support in place.

We work specifically on promoting KINDknow at UiT. The plan is to put up a sign (information board) about the centre at the institute's main entrance. The sign must have an active QR code.

The work package researchers at UiT have a project meeting once a month.

### WP 8: Families, generations and belonging

Starting from autumn 2019.

### WP 9: The competent kindergarten – systemic knowledge creation and dissemination

**Team leaders:** Øyvind Glosvik (HVL) Svein Ole Sataøen (HVL)

This research group is making good progress and started

the academic work already before the formal opening of BARNkunne in August. The group has members from two campuses, Sogndal and Bergen. We have arranged two full-day seminars with a special focus on the three doctoral projects linked to this Work Package. These three doctoral projects deal in various ways with connections between kindergartens and the outside world. These connections are central to the development and change regarding kindergartens as a knowledge system. Anne Grethe Sønsthagen, Hege Fimreite and Johanna Birkeland are at various stages in their doctoral projects. Johanna enters the final phase, Hege is in a start-up phase and Anne Grethe is finished doing her data collection and is now entering a reporting phase.

Otherwise, the group's work aims at understanding how different types of connections between external and internal knowledge systems generally affects kindergartens' activities. These themes will be given more attention in 2019. In 2018 we have concentrated on getting in place, getting to know each other and organising a work flow that supports the doctoral projects and simultaneously focuses on the Work Package research questions.

### WP 10: Leadership and diversity in kindergartens

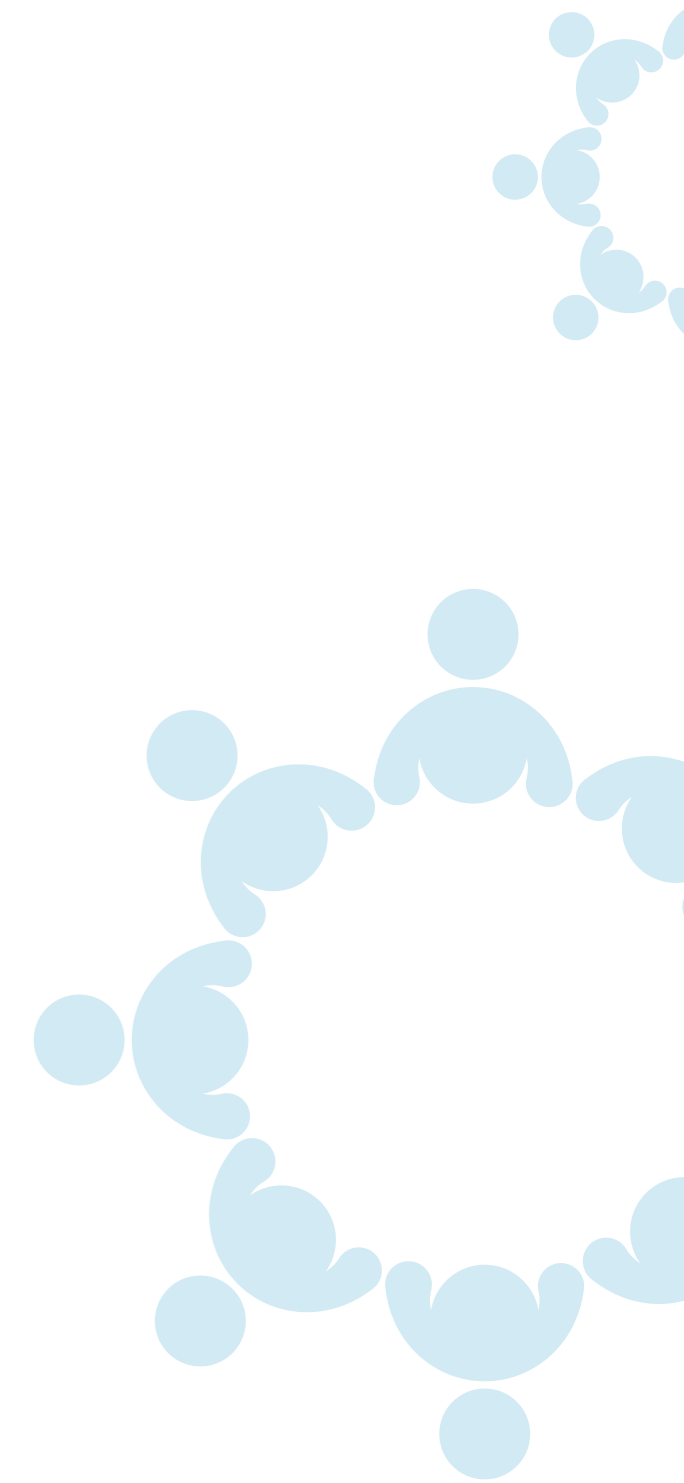
**Team leaders:** Kari Ludvigsen (HVL) and Dag-Øyvind Lotsberg (HVL)

In the autumn of 2018, the work package team leaders focused on obtaining external project funds. While awaiting this detailed planning of the efforts in the work package were halted. When it is now clear that HVL, together with Norce and UiB, carry out an evaluation of the implementation of the framework plan for the kindergarten, the efforts will be planned further and the connections between the projects clarified.

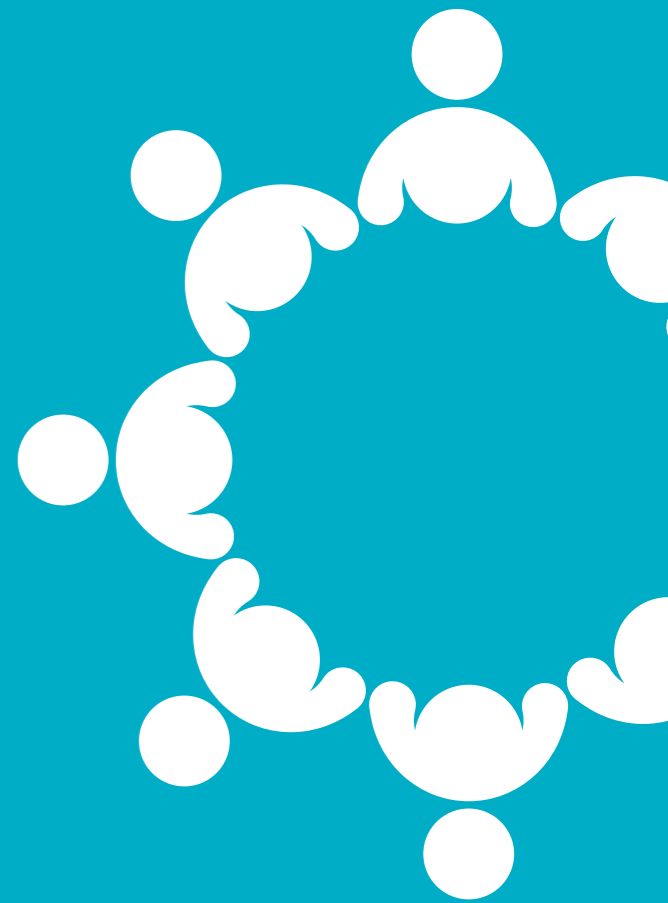
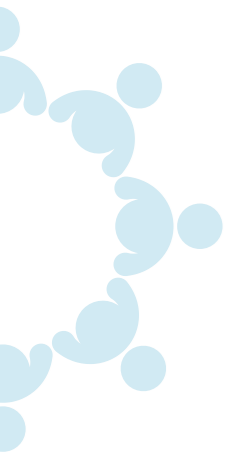
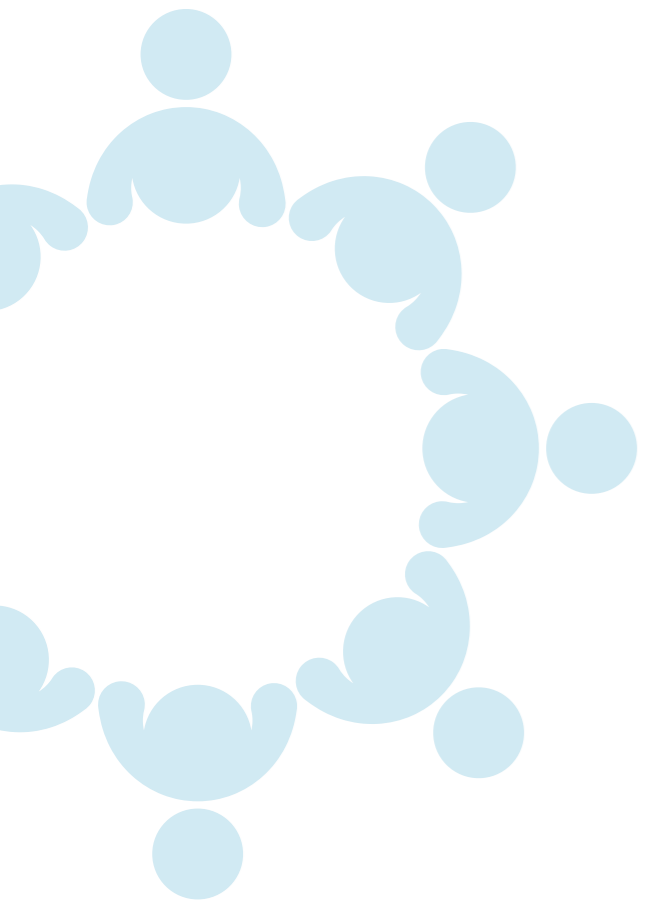
Work Package 10 is linked to the Research Group Professions, Organization and Politics, led by Kari Ludvigsen. PhDs and internal and external group members have, in several seminars, presented research on the kindergarten organization and its professional relations that are of great relevance to the work package. Two PhDs have started their data collection, and have largely completed the training module. Both have presented the projects in various professional forums.

## Finance and Accounting

We generally follow the budget









Western Norway  
University of  
Applied Sciences

Campus Haugesund  
Bjørnsonsgate 45

Campus Stord  
Klingenbergvegen,  
Rommetveit

Campus Bergen  
Inndalsveien 28 /  
Møllendalsveien 6-8

Campus Førde  
Svanehaugvegen 1

Campus Sogndal  
Røygata 6

Høgskulen på Vestlandet Postbox 7030 N-5020 Bergen Norway +47 55 58 58 00 [post@hvl.no](mailto:post@hvl.no) [hvl.no](http://hvl.no)  
Facebook [hvl.no](https://www.facebook.com/hvl.no) Twitter [@hvl\\_no](https://twitter.com/hvl_no) Instagram [@hvl.no](https://www.instagram.com/hvl.no) LinkedIn Høgskulen på Vestlandet (HVL)